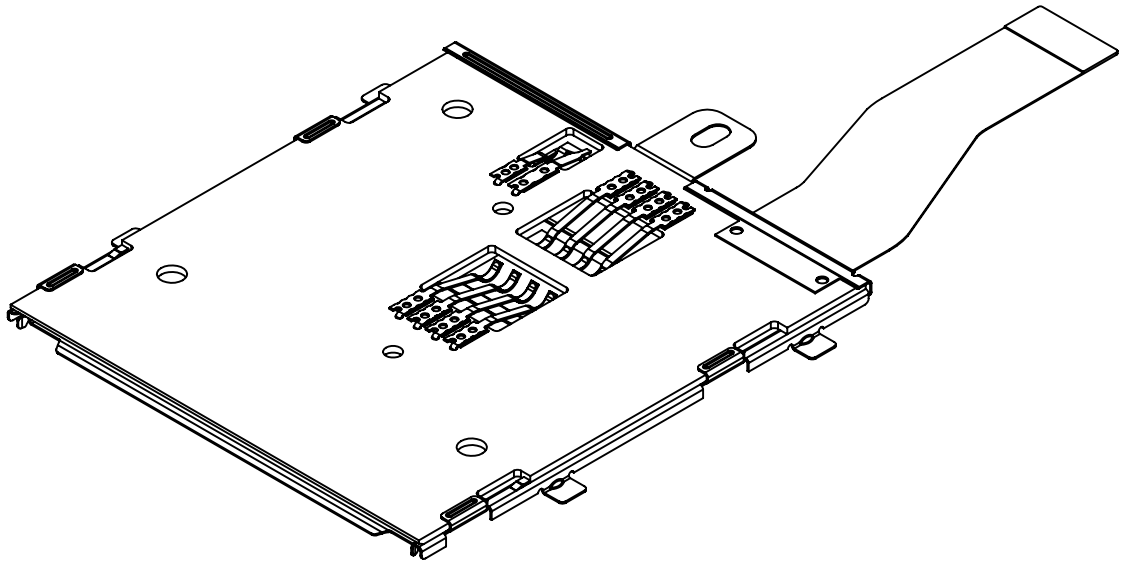


Tous droits strictement réservés. Reproduction ou communication a des tiers interdite sous quelque forme que ce soit sans autorisation écrite du propriétaire. Propriété de © FCI ELECTRONICS. Droits de reproduction FCI ELECTRONICS INC.

All rights strictly reserved. Reproduction or issue to third parties in any form whatever is not permitted without written authority from the proprietor. Property of © FCI ELECTRONICS. Copyright FCI ELECTRONICS INC.

PRODUCT NO.	FPC	PACKAGING	COMPONENTS	LEAD FREE	PCB COLOR
10010556-000	10010559-001	10017475-02-001	N/A	NO	GREEN
10010556-001	10010559-001	10017475-02-002	ELEC. PARTS	NO	GREEN
10010556-002LF	10010559-002LF	10017475-02-002	ELEC. PARTS	YES	BLUE
10010556-004LF	10056226-002LF(FFC)	10017475-02-004	N/A	YES	BLUE
10010556-006LF	10058983-001LF	10017475-02-003	N/A	YES	BLACK
10010556-005LF	10056226-003LF(FFC)	10017475-02-004	N/A	YES	BLUE
10010556-007LF	10081578-001	10017475-02-006	N/A	YES	BLACK
10010556-008LF	10056226-004LF(FFC)	10017475-02-003	N/A	YES	BLUE
10010556-009LF	10083983-001(FFC)	10017475-02-008	N/A	YES	BLUE
10010556-010LF	10056226-005LF(FFC)	340391-202	N/A	YES	GREEN
10010556-011LF	10087561-001	10017475-02-007	N/A	YES	BLUE
10010556-012LF	10087561-002	10017475-02-007	N/A	YES	BLUE
10010556-013LF	10088568-001	10017475-02-006	N/A	YES	BLACK
10010556-014LF	10087561-004	10017475-02-004	N/A	YES	BLUE



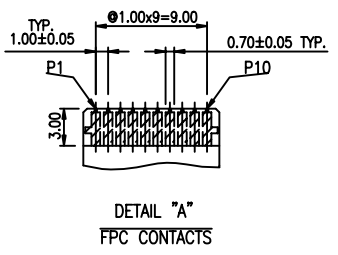
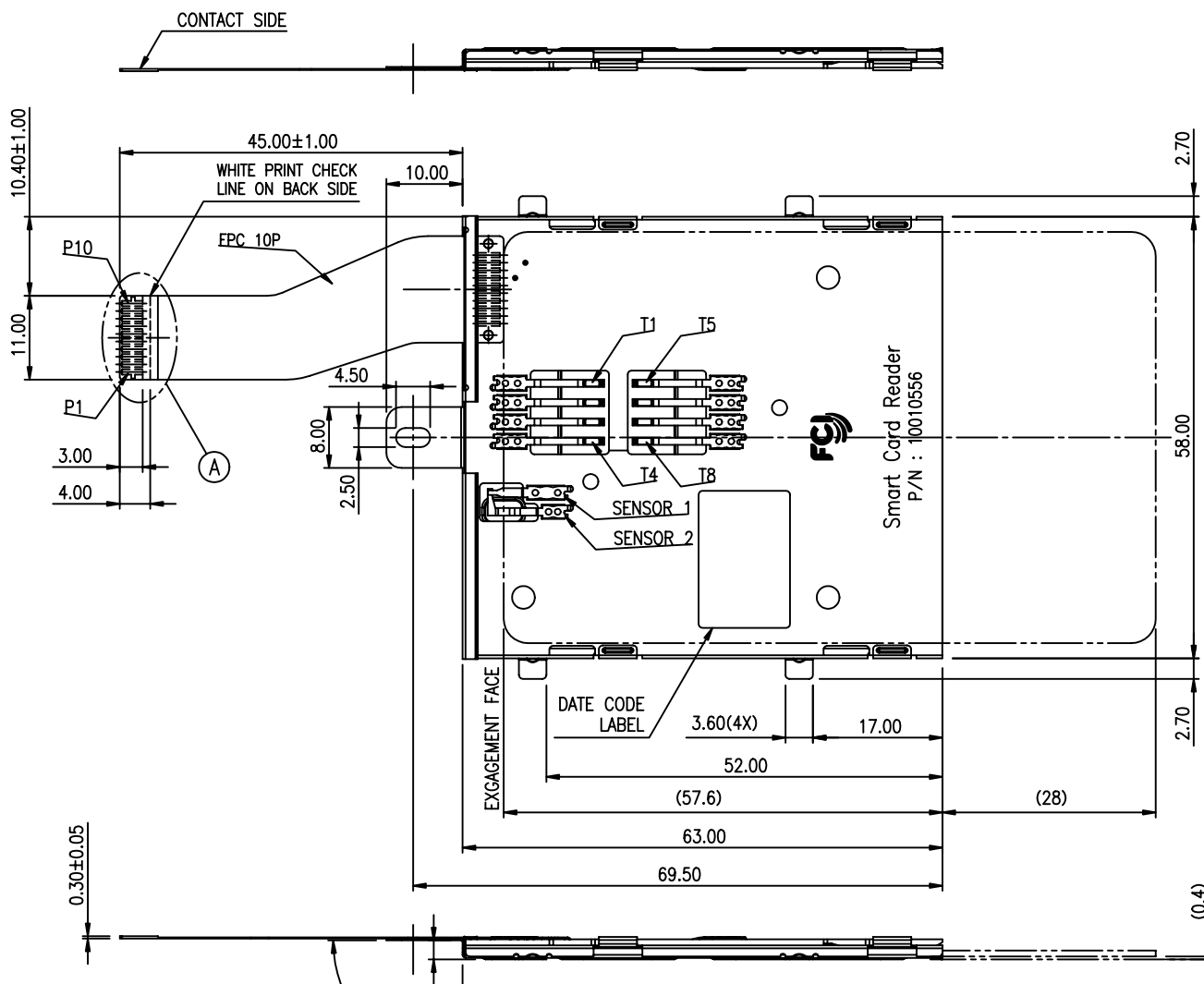
- NOTE :
- SMART CARD READER FOR LOWER PROFILE HEIGHT OF 3.0 mm.
  - TOTAL CIRCUIT RESISTANCE PER ONE LOOP SHALL NOT EXCEED 100 MILLIOHMS.
  - MATERIALS :  
CONTACTS : COPPER ALLOY, GOLD OVER NICKEL ON CONTACT AREA.  
TOP PCB : FR4.  
COVER : STAINLESS STEEL.
  - ENVIRONMENT :  
STORAGE TEMPERATURE : FROM -40°C TO 100°C.  
OPERATION TEMPERATURE : FROM -40°C TO 85°C.

mat'l. code				tolerances unless otherwise specified			CUSTOMER COPY		FCI www.fciconnect.com	
ltr	ecn no	dr	date	linear	$.X \pm 0.5$	projection	title SMART CARD READER ASSEMBLY			
R	N08-0136	SH	07/07/08		$.XX \pm 0.30$		product family 95 code -			
S	N08-0212	SH	10/06/08	angles	$.XXX \pm 0.10$		size		dwg no	
L	N07-0225	DT	9/15/07	dr	AJUANG 6/7/02	MM	product family 95		code -	
M	N08-0024	SH	2/15/08	enrg	AJUANG 6/7/02	scale	size		dwg no	
N	N08-0045	SH	3/19/08	chr	AJUANG 6/7/02	NONE	A3		10010556	
P	N08-0093	SH	06/11/08	appd	JENN.TSAO 6/7/02	sheet 1 of 15				
sheet index	revision	sheet								

Tous droits strictement réservés. Reproduction ou communication a des tiers interdite sous quelque forme que ce soit sans autorisation écrite du propriétaire. Propriété de © FCI ELECTRONICS. Droits de reproduction FCI ELECTRONICS INC.

All rights strictly reserved. Reproduction or issue to third parties in any form whatever is not permitted without written authority from the proprietor. Property of © FCI ELECTRONICS. Copyright FCI ELECTRONICS INC.

PRODUCT NO.  
10010556-000/001/002LF



SMART CARD	TERMINAL	FPC	FUNC.
C4	T4	P1	RFU
C3	T3	P2	Clock
C2	T2	P3	Reset
C1	T1	P4	Vcc
SENSOR 1	SENSOR 1	P5	SENSOR
SENSOR 2	SENSOR 2	P6	SENSOR
C5	T5	P7	Gnd
C6	T6	P8	Vpp
C7	T7	P9	I/O
C8	T8	P10	RFU

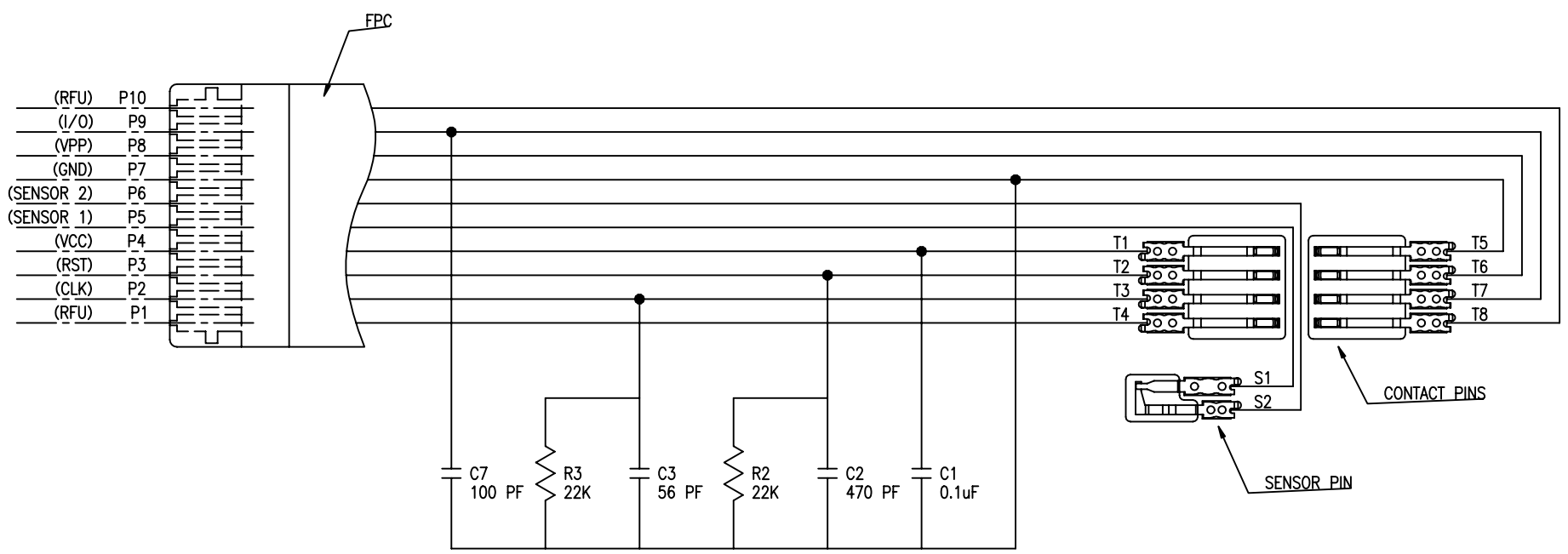
mat'l. code		tolerances unless otherwise specified		CUSTOMER COPY		FCI www.fciconnect.com	
ltr	ecn no	dr	date	linear	.X ± .5	projection	title
S					.XX ± .30		SMART CARD READER ASSEMBLY
				angles	.XXX ± .10		product family
					0° ± 2'	mm	code
		dr	A. JUANG	6/7/'02		scale	size
		enrg	A. JUANG	6/7/'02	NONE	A3	10010556
		chr	A. JUANG	6/7/'02			sheet
		appd	JENN TSAO	6/7/'02			2 of 15
sheet index	revision sheet						

Tous droits strictement réservés. Reproduction ou communication a des tiers interdite sous quelque forme que ce soit sans autorisation écrite du propriétaire.  
 Propriété de © FCI ELECTRONICS. Droits de reproduction FCI ELECTRONICS INC.



All rights strictly reserved. Reproduction or issue to third parties in any form whatever is not permitted without written authority from the proprietor.  
 Property of © FCI ELECTRONICS. Copyright FCI ELECTRONICS INC.

PRODUCT NO.
10010556-001/002LF



mat'l. code		tolerances unless otherwise specified		CUSTOMER COPY		 www.fciconnect.com	
ltr	ecn no	dr	date	linear	.X ± .5	projection	title
S					.XX ± .30	 mm	SMART CARD READER
				angles	.XXX ± .10		ELEC. PASSIVE COMPONENTS CIRCUIT
					0° ± 2'	product family	SMART PLUS
				dr	A. JUANG 6/7/'02	size	dwg no
				engr	A. JUANG 6/7/'02	scale	A3 10010556
				chr	A. JUANG 6/7/'02	NONE	sheet 3 of 15
				appd	JENN TSAO 6/7/'02		
sheet index	revision sheet						

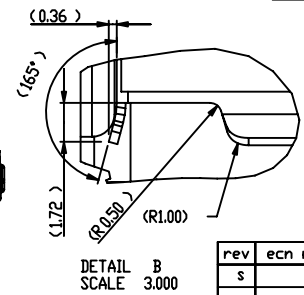
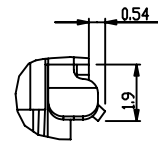
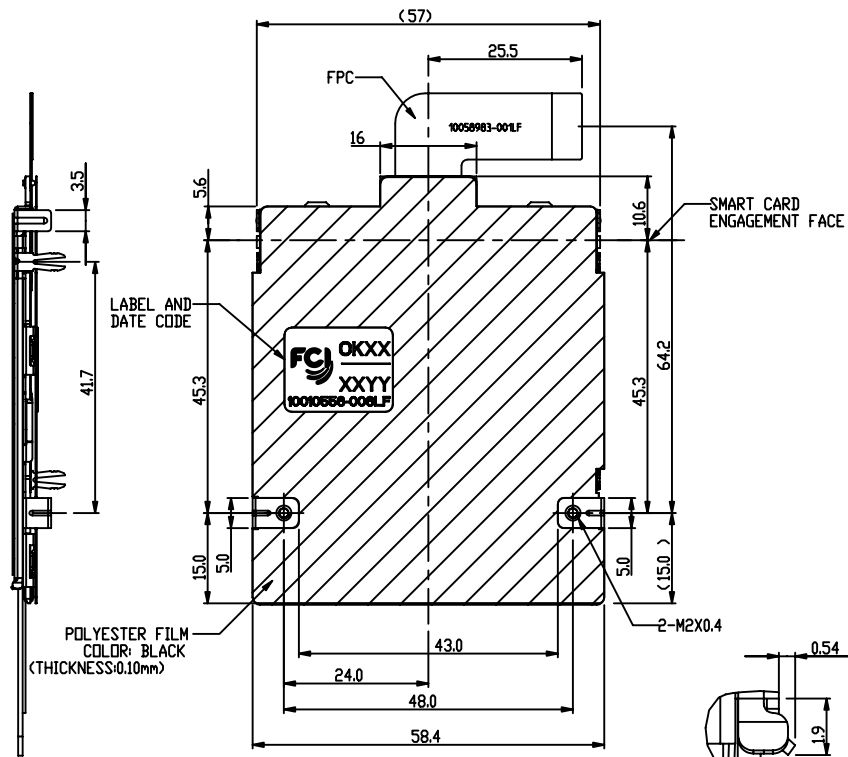


PRODUCT NO  
10010556-006LF

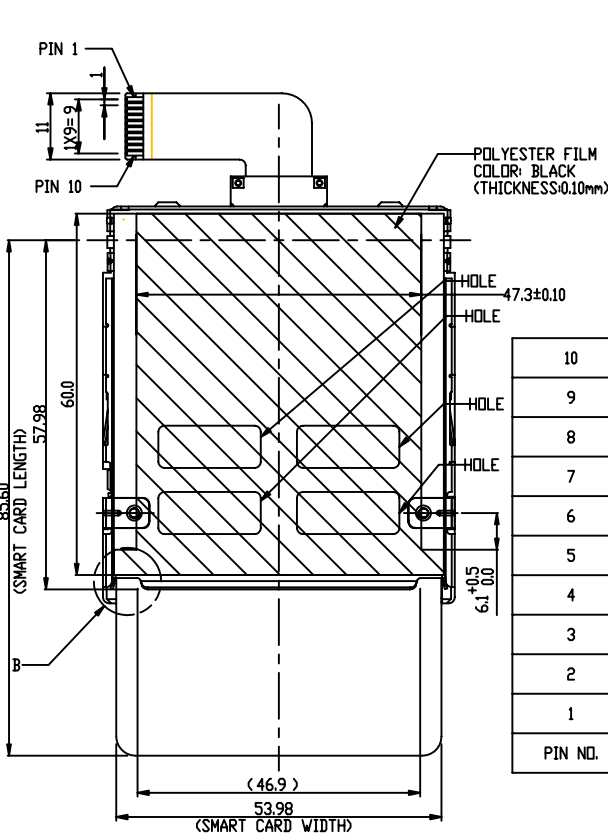
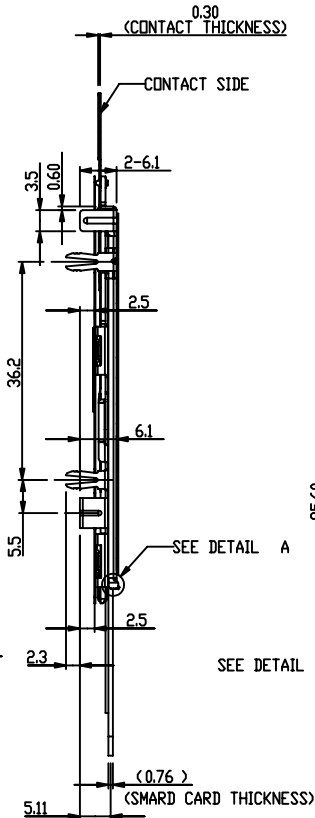
Tous droits strictement reserves. Reproduction ou communication a des tiers interdite sous quelque forme que ce soit sans autorisation écrite du propriétaire. Propriete de c FCI. Droits de reproduction FCI.



All rights strictly reserved. Reproduction or issue to third parties in any form whatever is not permitted without written authority from the proprietor. Property of FCI. Copyright FCI.



rev	ecn no	dr	date
s			



PIN NO.	ASSIGNMENT
10	SENSOR 2
9	SENSOR 1
8	RFU
7	I/O
6	Vpp
5	Gnd
4	RFU
3	Clock
2	Reset
1	Vcc

TOLERANCE UNLESS OTHERWISE SPECIFIED	
LINEAR	X.X=±0.5 X.XX=±0.3 X.XXX=±0.10
ANGLE	

www.fciconnect.com		<input checked="" type="checkbox"/> tolerance	<input type="checkbox"/> projection	MM
Dr	BENNY CHEN 08/04/05	Product family		size
Eng	BENNY CHEN 08/04/05	Spec ref		A4
Chr	PAUL WANG 09/02/05	Material		Scale 1.000
Appr	JOSEPH HSIA 09/02/05			ECN
title		SMART CARD READER (FPC CABLE) ASSEMBLY		Rev. S
catalog no		10010556		sheet 5 of 15

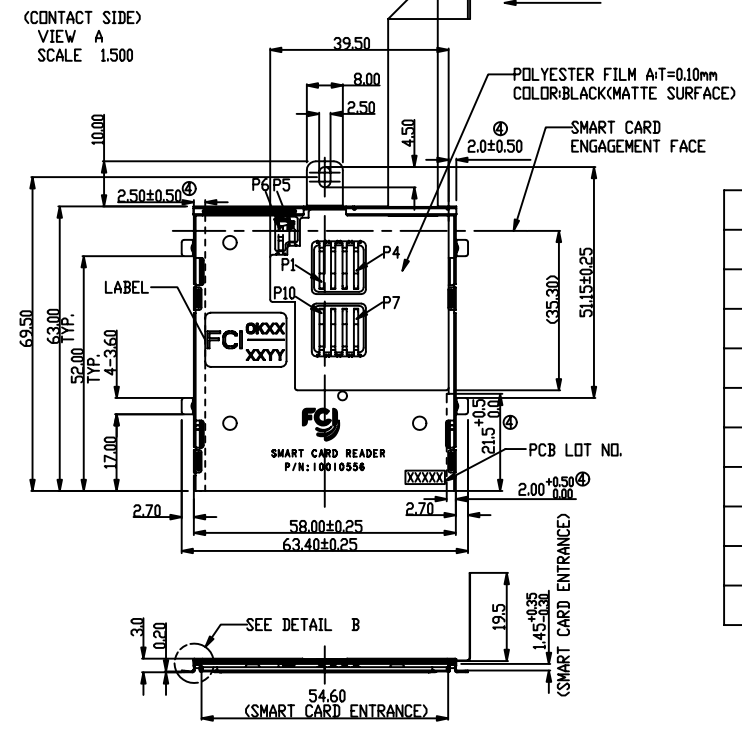
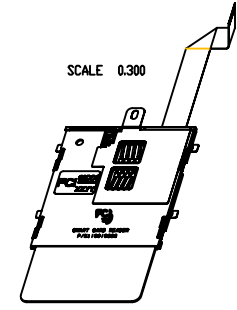
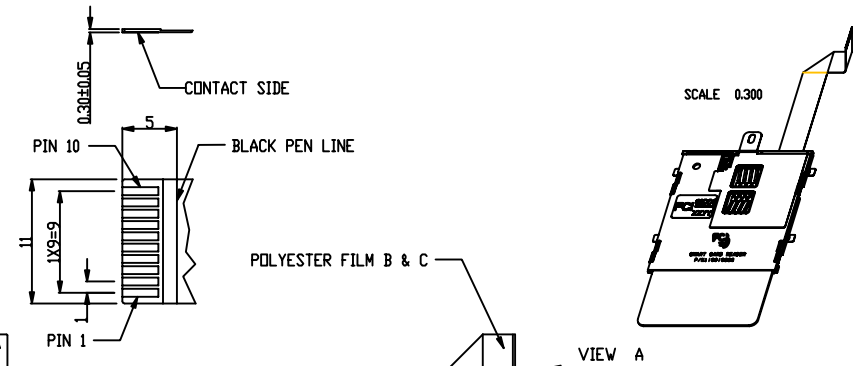
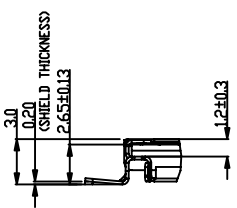
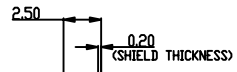
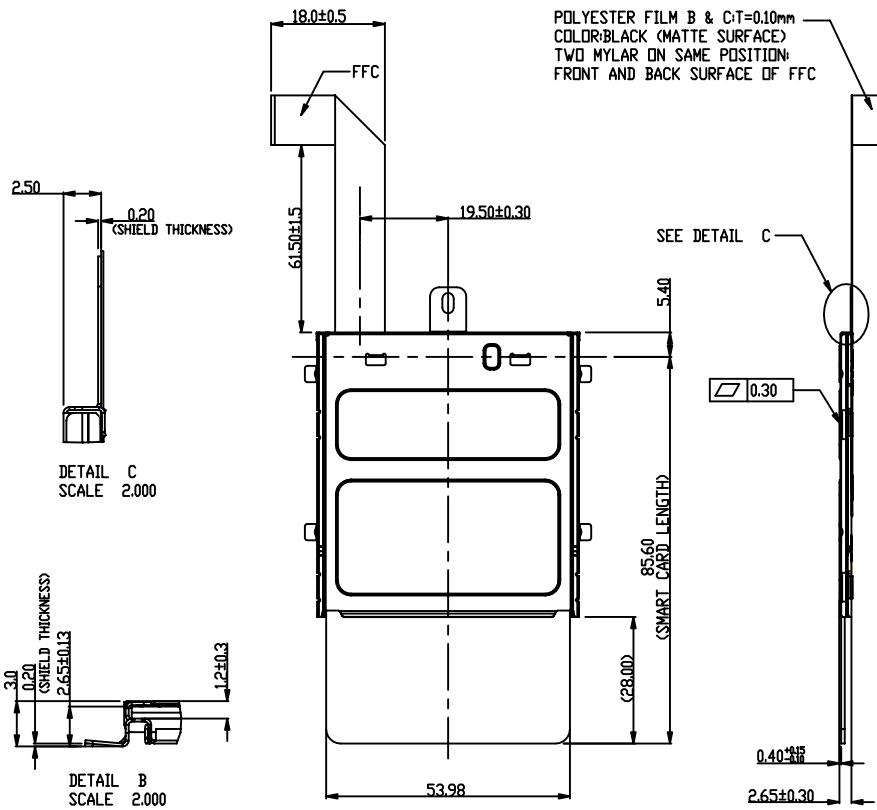


PRODUCT NO  
10010556-005LF

Tous droits strictement reserves. Reproduction ou communication a des tiers interdite sous quelque forme que ce soit sans autorisation écrite du propriétaire. Propriete de c FCI. Droits de reproduction FCI.



All rights strictly reserved. Reproduction or issue to third parties in any form whatever is not permitted without written authority from the proprietor. Property of FCI. Copyright FCI.



10	RFU
9	I/O
8	Vpp
7	GND
6	Sensor 2
5	Sensor 1
4	Vcc
3	Reset
2	Clock
1	RFU
PIN NO.	ASSIGNMENT

TOLERANCE UNLESS OTHERWISE SPECIFIED	
LINEAR	X.X=±0.25 X.XX=±0.13 X.XXX=±0.050
ANGLE	±0°30'

NOTE:  
1. Material:  
METAL SHELL: STAINLESS STEEL, T=0.20mm  
PCB: FR-4, T=0.80mm  
TERMINAL: PHOSPHOR BRONZE.  
PLATING SPEC AS BELOW:  
ALL OVER NICKEL UNDERPLATING  
GOLD PLATING ON CONTACT SURFACE.  
MATTE TIN PLATING ON SOLDER TAIL.  
FLEXIBLE  
FLAT CABLE: TOTAL LENGTH=103.5±2mm  
PLATING SPEC AS BELOW:  
CONTACT SURFACE: TIN PLATING.  
SOLDER TAIL: TIN PLATING.  
2. CARD DETECTION SWITCH NORMALLY OPEN WITHOUT MATING CARD  
3. REFERENCE SPECIFICATION:  
PRODUCT SPEC. GS 12-231  
PACKING SPEC. GS 14-829  
④ THE AREA IS PROHIBITED TO PASTE THE MYLAR AND LABEL.

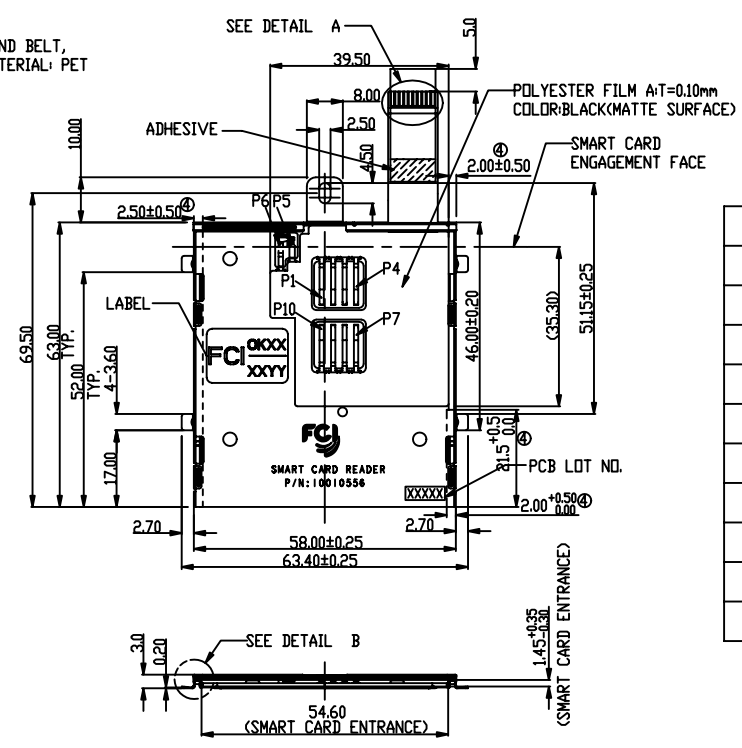
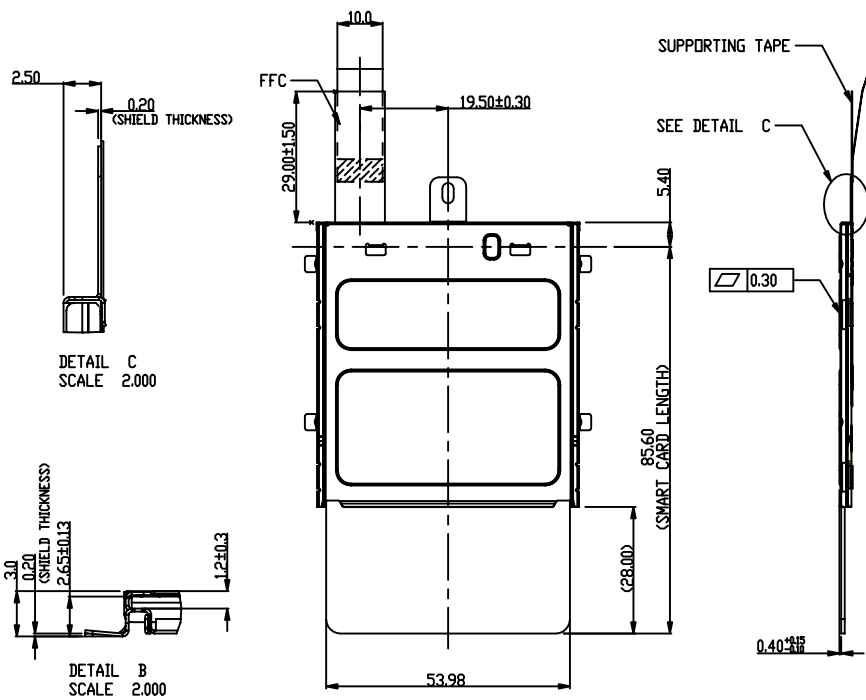
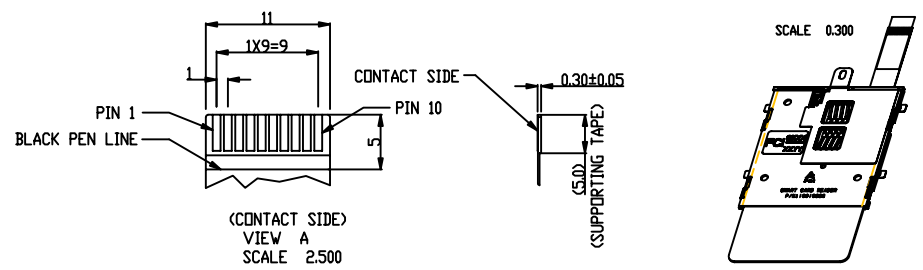
Mark with 10010556-004LF REV. In area indicated by X....		Material	Spec ref	
		Mat code	tolerance	projection
		Heatreat	✓	MM
		Plating/Finish		
rev	ecn no	dr	date	size A4
S				Scale 0.500
		Dr DANIEL TAO	07/05/07	Product family
		Eng DANIEL TAO	07/05/07	Model Name 10010556-005LF
		Chr DANIEL TAO	07/05/07	Model Revision
		Appr JOSEPH HSIA	07/05/07	REL Level
		FCI title	ASSEMBLY SMART CARD READER	
		Pro/E file	catalog no	custoemr drawing sheet 7 of 15
		chg no	10010556	Rev. S

PRODUCT NO  
10010556-008LF

Tous droits strictement reserves. Reproduction ou communication a des tiers interdite sous quelque forme que ce soit sans autorisation ecrite du proprietaire. Propriete de c FCI. Droits de reproduction FCI.



All rights strictly reserved. Reproduction or issue to third parties in any form whatever is not permitted without written authority from the proprietor. Property of FCI. Copyright FCI.



10	RFU
9	I/O
8	Vpp
7	GND
6	Sensor 2
5	Sensor 1
4	Vcc
3	Reset
2	Clock
1	RFU
PIN NO.	ASSIGNMENT

TOLERANCE UNLESS OTHERWISE SPECIFIED	
LINEAR	X.X=±0.5 X.XX=±0.3 X.XXX=±0.10
ANGLE	±0°30'

NOTE:  
1. Material:  
METAL SHELL: STAINLESS STEEL, T=0.20mm  
PCB: FR-4, T=0.80mm  
TERMINAL: PHOSPHOR BRONZE.  
PLATING SPEC AS BELOW:  
ALL OVER NICKEL UNDERPLATING  
GOLD PLATING ON CONTACT SURFACE.  
MATTE TIN PLATING ON SOLDER TAIL.  
FLEXIBLE  
FLAT CABLE: TOTAL LENGTH=33.5±1mm  
PLATING SPEC AS BELOW:  
CONTACT SURFACE: TIN PLATING.  
SOLDER TAIL: TIN PLATING.  
2. CARD DETECTION SWITCH NORMALLY OPEN WITHOUT MATING CARD  
3. REFERENCE SPECIFICATION:  
PRODUCT SPEC. GS 12-231  
PACKING SPEC. GS 14-829  
④ THE AREA IS PROHIBITED TO PASTE THE MYLAR AND LABEL.

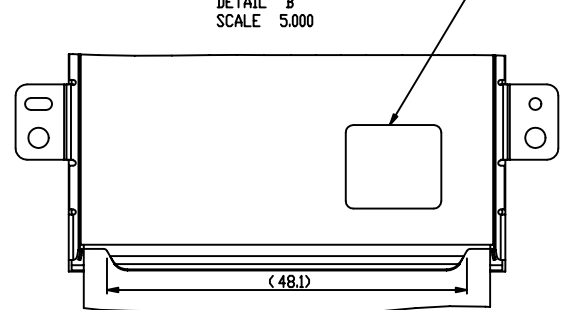
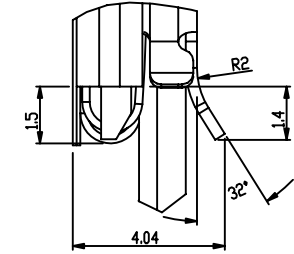
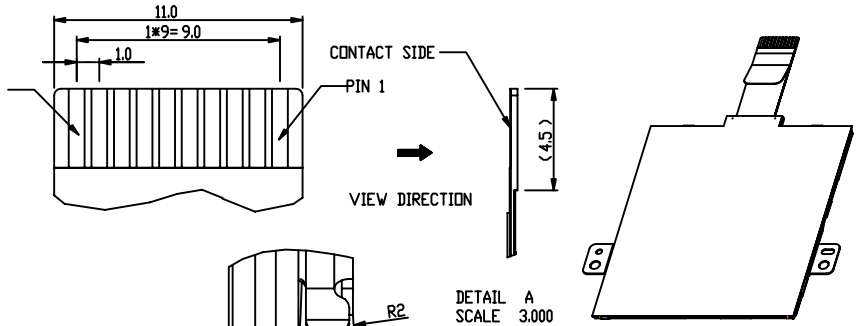
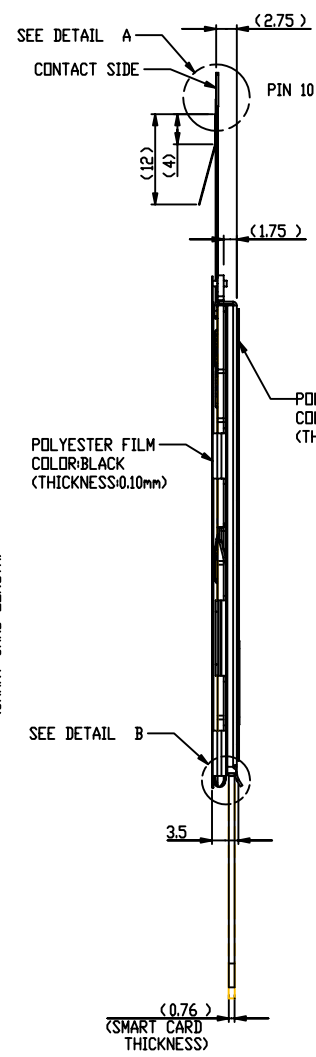
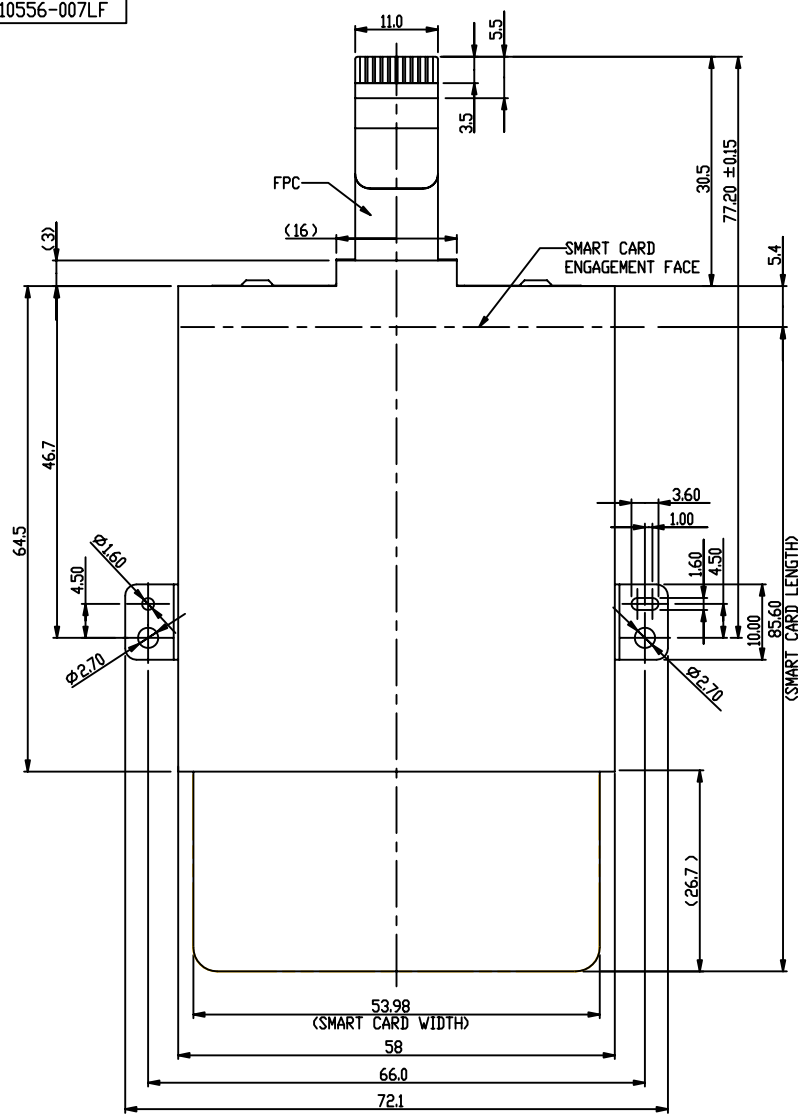
Mark with 10010556-004LF REV. In area indicated by X....		Material		Spec ref																			
		Mat code		tolerance																			
		Heatreat		projection																			
		Plating/Finish		MM																			
rev		ecn no		dr		date		Dr DANIEL TAO		07/05/07		size		A4		Scale		0.500					
S								Eng DANIEL TAO		07/05/07		Product family				Chr DANIEL TAO		07/05/07		Model Name 10010556-008LF		ECN	
								Appr JOSEPH HSIA		07/05/07		Model Revision				REL Level							
								FCI		title		ASSEMBLY		Smart card reader		ding no		10010556		Rev.		S	
								Pro/E file		catalog no						CUSTOMER DRAWING		sheet 8 of 15					





Copyright FCI.

PART NUMBER  
0010556-007LF



10	SENSOR 2
9	SENSOR 1
8	RFU
7	I/O
6	VPP
5	GND
4	RFU
3	CLOCK
2	RESET
1	VCC
PIN NO.	ASSIGNMENT

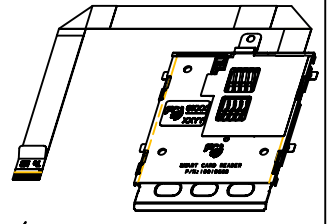
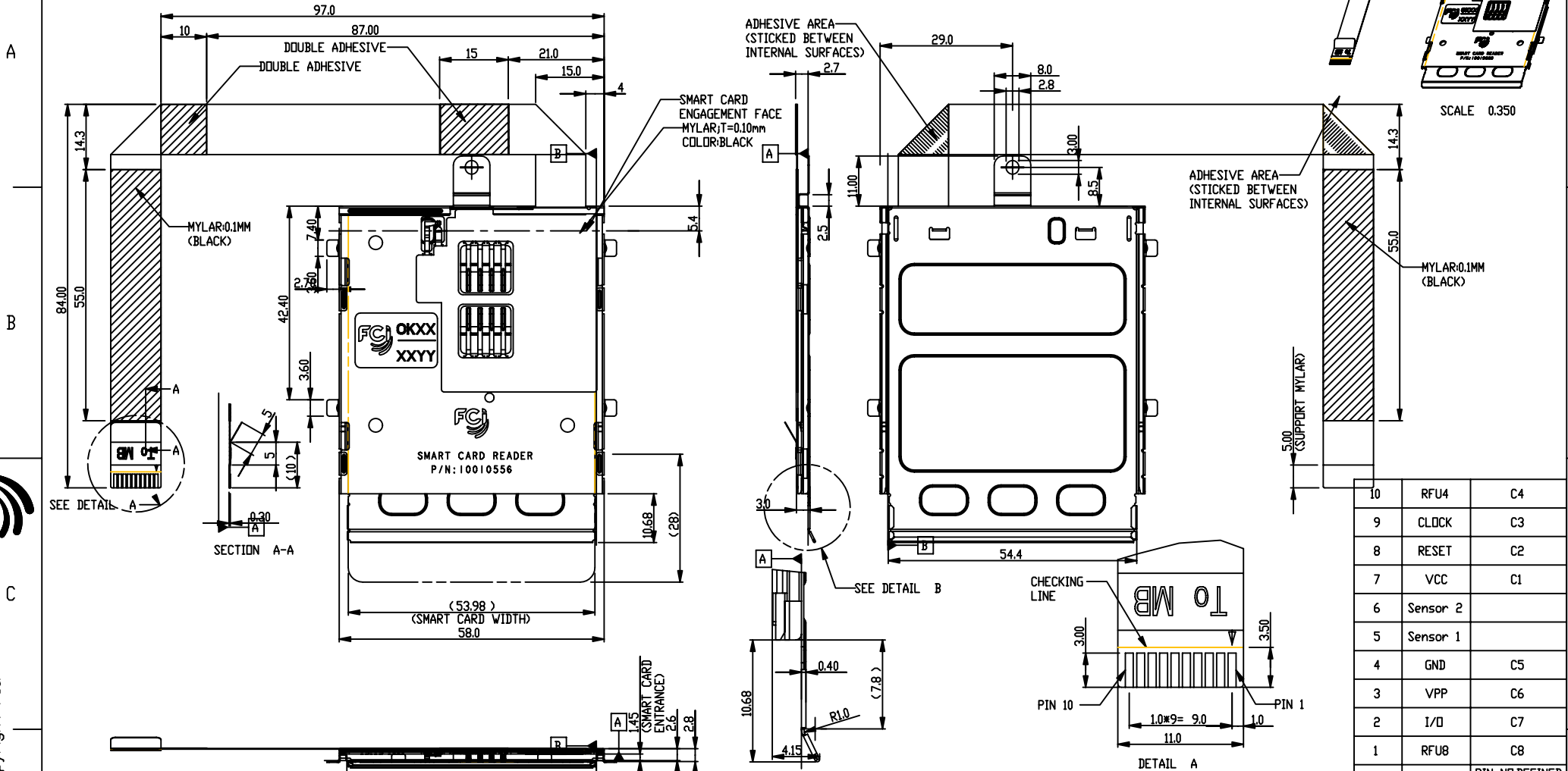
NOTE:  
1. Material:  
METAL SHELL: STAINLESS STEEL, T=0.30mm  
GUIDE BLOCK: THERMOPLASTIC, UL94V-0.  
PCB: FR-4, T=0.80mm, UL94V-0.  
FPC: POLYIMIDE, T=0.30mm, UL94V-0.  
PLATING SPEC AS BELOW:  
UNDERPLATING: Ni 50 uln Min.  
CONTACT SIDE PLATING: Au 3 uln, Min.  
SOLDER SIDE PLATING: Pure Tin 100 uln Min.  
TERMINAL: COPPER ALLOY.  
PLATING SPEC AS BELOW:  
UNDERPLATING: Ni 50 uln Min.  
CONTACT PLATING: Au 30 uln Min.  
SOLDER TAIL: Pure TIN 75 uln Min.  
2. CARD DETECTION SWITCH NORMALLY OPEN WITHOUT MATING CARD  
3. REFERENCE SPECIFICATION:  
PRODUCT SPEC: GS-12-231.  
PACKING SPEC: GS-14-829.

rev	ecn no	dr	date
M	N08-0024	BENNY	03/05/08
N	N08-0045	BENNY	05/05/08
P	-	-	-
R	-	-	-
S	-	-	-
-	-	-	-
-	-	-	-

www.fciconnect.com		surface x	tolerance x	std x	projection	MM
		TOLERANCES UNLESS OTHERWISE SPECIFIED				
Dr	BENNY CHEN	07/23/07	ANGULAR	0.X	±0.25	size A4
Eng	BENNY CHEN	07/23/07	LINEAR	0.XX	±0.15	Scale 0.500
Chr	PAUL WANG	09/10/07	0° ±3°	0.XXX	±	ECN *
Appr	JOSEPH HSIA	09/11/07	Product family			Spec ref *
		title		ASSEMBLY SMART CARD READER		Rev. S
catalog no		* CUSTOMER DRAWING		sheet 9 of 15		

REV F - 2006-04-17

PART NUMBER  
10010556-009LF



PIN NO.	ASSIGNMENT	PIN NO. DEFINED BY ISO-7816
10	RFU4	C4
9	CLOCK	C3
8	RESET	C2
7	VCC	C1
6	Sensor 2	
5	Sensor 1	
4	GND	C5
3	VPP	C6
2	I/O	C7
1	RFU8	C8

NOTE:  
1. Material:  
METAL SHELL: STAINLESS STEEL, T=0.20mm  
PCB: FR-4, T=0.80mm  
TERMINAL: COPPER ALLOY.  
PLATING SPEC AS BELOW:  
ALL OVER NICKEL UNDERPLATING  
GOLD PLATING ON CONTACT SURFACE.  
MATTE TIN PLATING ON SOLDER TAIL.  
FLEXIBLE FLAT CABLE: TOTAL LENGTH=33.5±1mm  
PLATING SPEC AS BELOW:  
CONTACT SURFACE: TIN PLATING.  
SOLDER TAIL: TIN PLATING.  
2. CARD DETECTION SWITCH NORMALLY OPEN WITHOUT MATING CARD

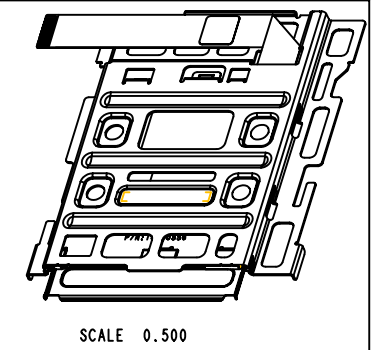
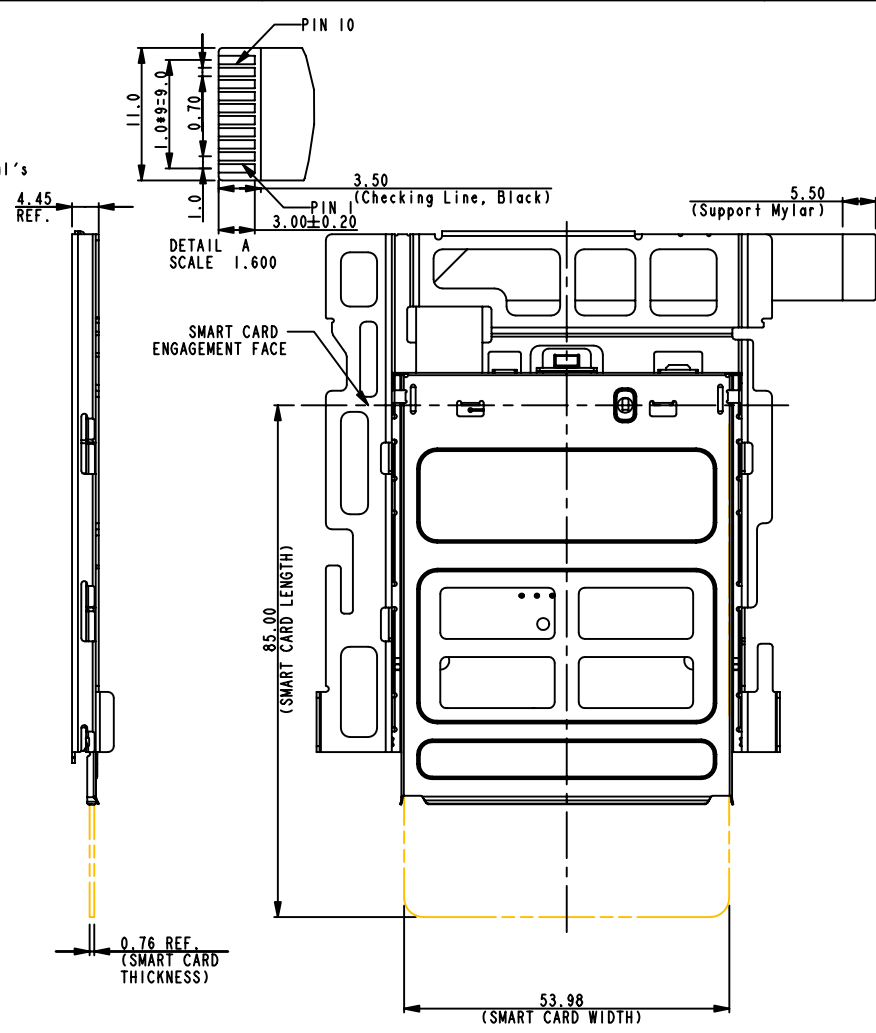
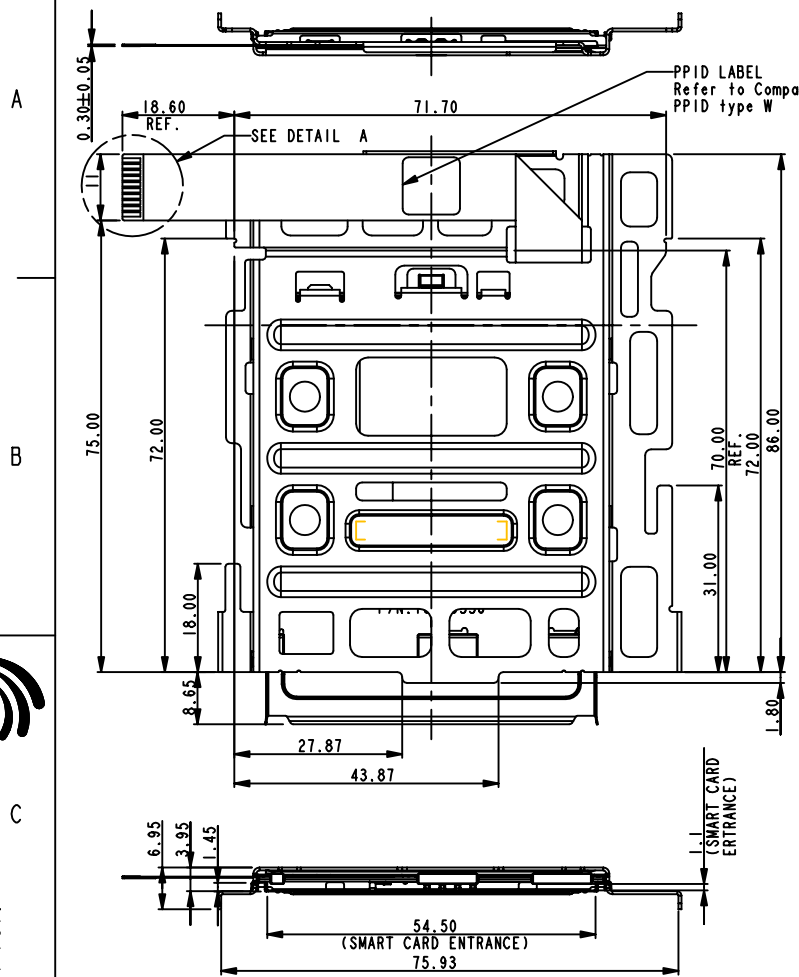
rev	ecn no	dr	date
P	N08-0093	SH	06/11/08
R	-	-	-
S	-	-	-
-	-	-	-
-	-	-	-
-	-	-	-

www.fciconnect.com		surface x	tolerance x	std x	projection	MM
		TOLERANCES UNLESS OTHERWISE SPECIFIED			size A4	Scale 0.500
Dr	BENNY CHEN	10/24/07	ANGULAR	0.X	±0.4	
Eng	BENNY CHEN	10/24/07	LINEAR	0.XX	±0.25	
Chr	PAUL WANG	12/15/07	0° ±X°	0.XXX	±X	
Appr	JOSEPH HSIA	12/15/07	Product family	Spec ref		*
title ASSEMBLY SMART CARD READER		cat no	10010556	Rev. S		
		* CUSTOMER DRAWING		sheet 10 of 15		



Copyright FCI.

PART NUMBER  
10010556-010LF



NOTE:  
1. Material:  
METAL SHELL: STAINLESS STEEL  
BRACKET: STEEL  
GUIDE BLOCK: THERMOPLASTIC, UL94V-0.  
PCB: FR-4, T=0.80mm, UL94V-0.  
FFC: POLYESTER, UL20624.  
PLATING SPEC AS BELOW:  
CONTACT SIDE PLATING: GOLD.  
SOLDER SIDE PLATING: Pure Tin.  
TERMINAL: COPPER ALLOY.  
PLATING SPEC AS BELOW:  
UNDERPLATING: NICKEL.  
CONTACT PLATING: GOLD.  
SOLDER TAIL: Pure TIN.  
2. CARD DETECTION SWITCH NORMALLY OPEN WITHOUT MATING CARD  
3. REFERENCE SPECIFICATION:  
PRODUCT SPEC.: GS-12-231.  
PACKING SPEC.: GS-14-829.

rev	ecn no	dr	date
P	N08-0093	SH	06/11/08
R	N08-0136	SH	07/01/08
S	N08-0212	SH	10/06/08
-	-	-	-
-	-	-	-
-	-	-	-

PIN NO.	ASSIGNMENT	PIN NO. DEFINED BY ISO-7816
10	VCC	C1
9	Reset	C2
8	Clock	C3
7	RFU4	C4
6	Gnd	C5
5	VPP	C6
4	I/O	C7
3	RFU8	C8
2	SENSOR 2	
1	SENSOR 1	

www.fciconnect.com		surface x	tolerance x	std x	projection	MM
		TOLERANCES UNLESS OTHERWISE SPECIFIED			⊕	←
Dr	BENNY CHEN	02/05/08	ANGULAR	0.X	±0.3	size A4
Eng	BENNY CHEN	02/05/08	LINEAR	0.XX	±.20	Scale 1.000
Chr	PAUL WANG	02/13/08	0° ±X°	0.XXX	±X	ECN *
Appr	JOSEPH HSIA	02/15/08	Product family		Spec ref *	
FCI		title ASSEMBLY SMART CARD READER			dwg no 10010556	Rev. S
		catalog no			* CUSTOMER DRAWING sheet 11 of 15	

Copyright FCI.

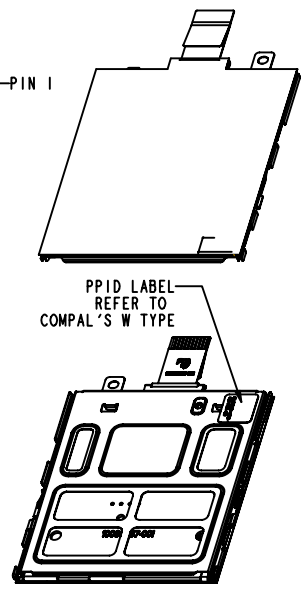
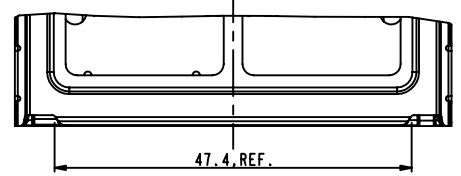
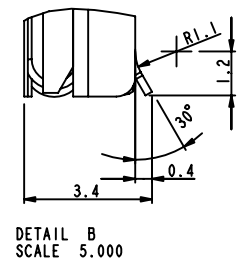
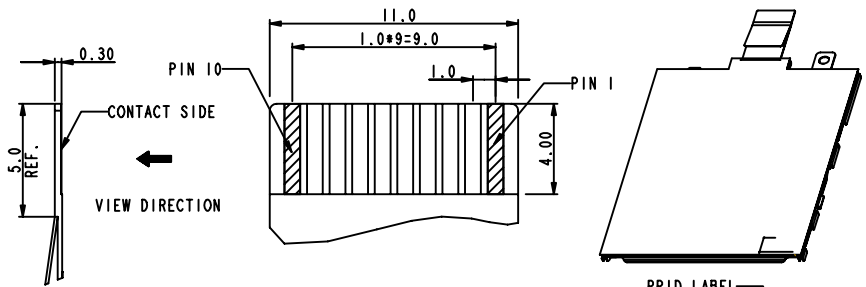
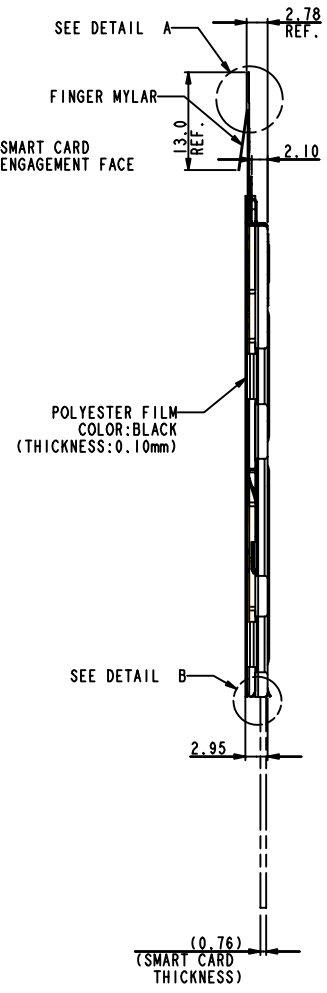
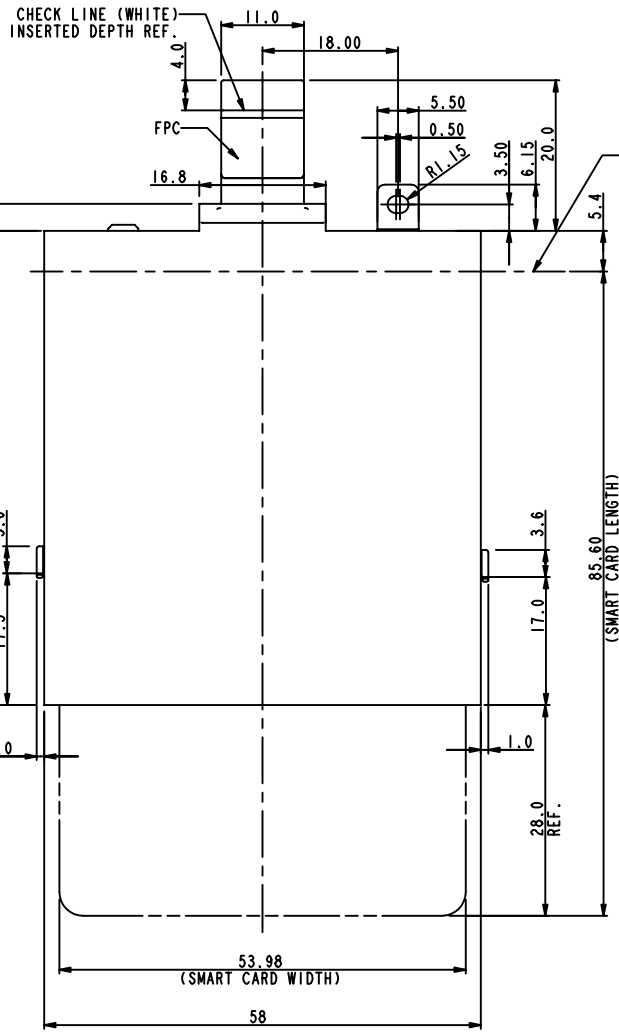






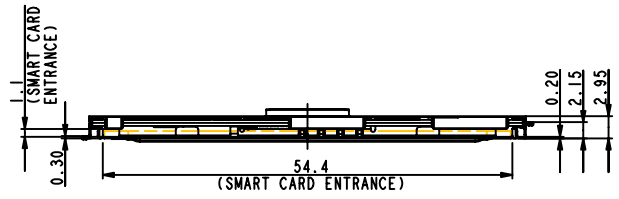
Copyright FCI.

PART NUMBER  
10010556-013LF



NOTE:  
1. Material:  
METAL SHELL: STAINLESS STEEL, T=0.20mm  
GUIDE BLOCK: THERMOPLASTIC, UL94V-0.  
PCB: FR-4, T=0.80mm, UL94V-0.  
FPC: POLYIMIDE, T=0.30mm, UL94V-0.  
PLATING SPEC AS BELOW:  
UNDERPLATING: Ni 50 uin Min.  
CONTACT SIDE PLATING: Au 3 uin Min.  
SOLDER SIDE PLATING: Pure Tin 100 uin Min.  
TERMINAL: COPPER ALLOY.  
PLATING SPEC AS BELOW:  
UNDERPLATING: Ni 50 uin Min.  
CONTACT PLATING: Au 30 uin Min.  
SOLDER TAIL: Pure TIN 75 uin Min.  
2. CARD DETECTION SWITCH NORMALLY OPEN WITHOUT MATING CARD  
3. REFERENCE SPECIFICATION:  
PRODUCT SPEC.: 65-12-231.  
PACKING SPEC.: 65-14-829.

10	VCC	C 1
9	GND	C 5
8	RESET	C 2
7	VPP	C 6
6	CLOCK	C 3
5	I/O	C 7
4	RFU 4	C 4
3	RFU 8	C 8
2	SENSOR 2	
1	SENSOR 1	
PIN NO.	ASSIGNMENT	DEFINED BY ISO 7816



rev	ecn no	dr	date
R	N08-0136	BENNY	05/08/08
S	N08-0212	SH	10/06/08
-	-	-	-
-	-	-	-
-	-	-	-
-	-	-	-

www.fciconnect.com		surface	tolerance	std	projection	MM
		x	x	x		
		TOLERANCES UNLESS OTHERWISE SPECIFIED				
Dr	BENNY CHEN	05/08/08	ANGULAR	0.X	±0.25	size A4
Eng	BENNY CHEN	05/08/08	LINEAR	0.XX	±0.15	Scale 0.500
Chr	PAUL WANG	05/19/08	0° ±3°	0.XXX	±	ECN *
Appr	JOSEPH HSIA	06/16/08	Product family		Spec ref #	
		title			ASSEMBLY	Rev. S
		SMART CARD READER			0010556	
catalog no		* CUSTOMER DRAWING				sheet 14 of 15

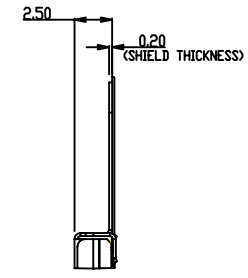
REV F - 2008-04-17

PRODUCT NO	FPC
10010556-014LF	10086571-004

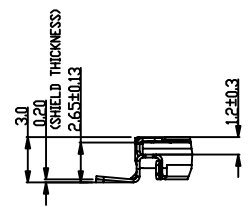
Tous droits strictement reserves. Reproduction ou communication a des tiers interdite sous quelque forme que ce soit sans autorisation ecrite du proprietaire. Propriete de c FCI. Droits de reproduction FCI.



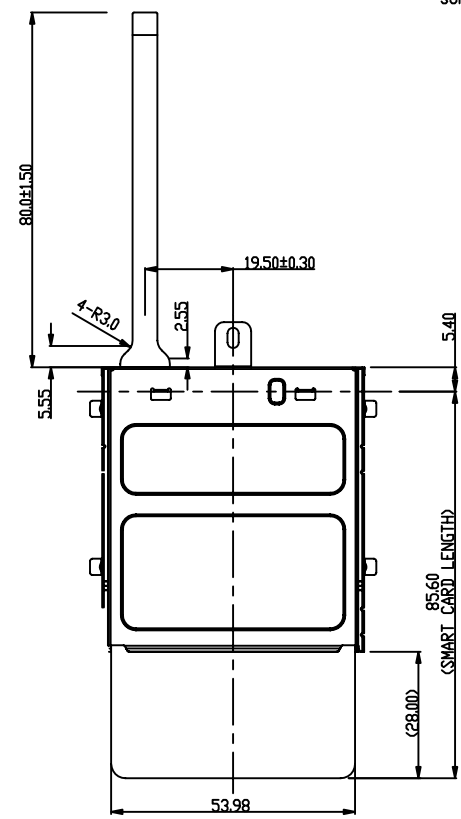
All rights strictly reserved. Reproduction or issue to third parties in any form whatever is not permitted without written authority from the proprietor. Property of FCI. Copyright FCI.



DETAIL C  
SCALE 2,000

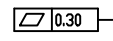


DETAIL B  
SCALE 2,000

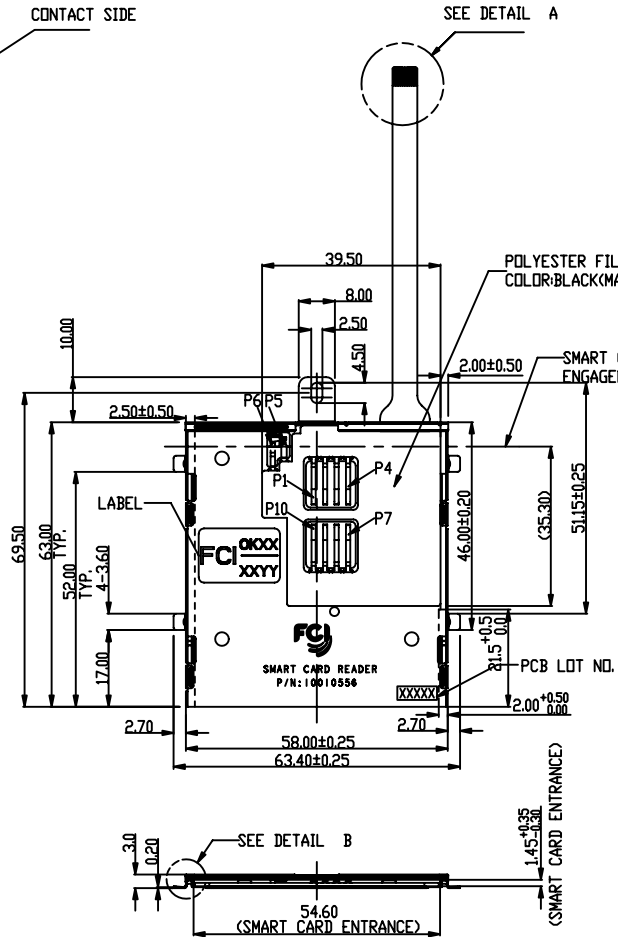


0.30±0.05 CONTACT SIDE  
SUPPORTING TAPE

SEE DETAIL C



0.40±0.05



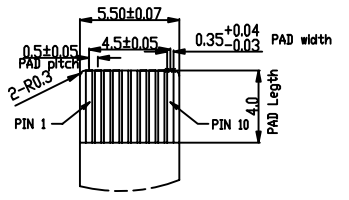
SEE DETAIL A

POLYESTER FILM A/T=0.10mm  
COLOR:BLACK(MATTE SURFACE)

SMART CARD  
ENGAGEMENT FACE

PCB LOT NO.

(SMART CARD ENTRANCE)



DETAIL A

P10	RFU	10
P8	Vpp	9
P9	I/O	8
P7	GND	7
P5	Sensor 1	6
P4	Vcc	5
P3	Reset	4
P6	Sensor 2	3
P2	Clock	2
P1	RFU	1
Terminal	ASSIGNMENT	FPC

TOLERANCE UNLESS OTHERWISE SPECIFIED	
LINEAR	X.X=±0.5 X.XX=±0.15 X.XXX=±0.050
ANGLE	±0°30'

- NOTE:
- Material: METAL SHELL: STAINLESS STEEL, T=0.20mm  
PCB: FR-4, T=0.80mm  
TERMINAL: PHOSPHOR BRONZE.  
PLATING SPEC AS BELOW:  
ALL OVER NICKEL UNDERPLATING  
GOLD PLATING ON CONTACT SURFACE.  
MATTE TIN PLATING ON SOLDER TAIL.  
  
FPC PLATING SPEC AS BELOW:  
CONTACT SURFACE: GOLD FLASH.  
SOLDER TAIL: TIN PLATING.
  - CARD DETECTION SWITCH NORMALLY OPEN WITHOUT MATING CARD
  - REFERENCE SPECIFICATION:  
PRODUCT SPEC. GS 12-231  
PACKING SPEC. GS 14-829
  - THE AREA IS PROHIBITED TO PASTE THE MYLAR AND LABEL.
  - ALL PART SAME AS 10010556-011LF, EXCEPT FPC

Mark with 10010556-014LF REV. in area indicated by X....

rev	ecn no	dr	date
N	N08-0045	SH	05/08/08
P	N08-XXXX	SH	05/23/08
R	N08-0136	SH	07/07/08
S			

Material		Spec ref	
Mat code		tolerance	projection
Heatreat		✓	MM
Plating/Finish		size	A4
Dr	MIAD SH	05/08/08	Scale
Eng	MIAD SH	05/08/08	0.500
Chr	DANIEL TAD	05/08/08	Product family
Appr	JOSEPH HSIA	05/08/08	Model Name
			Model Revision
			REL Level
FCI		title	ASSEMBLY
		ding no	10010556
		Rev.	S
Pro/E file	catalog no	CUSTOMER DRAWING	sheet 15 of 15